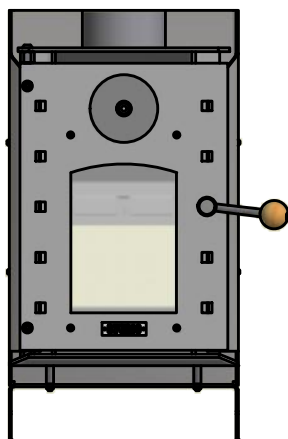
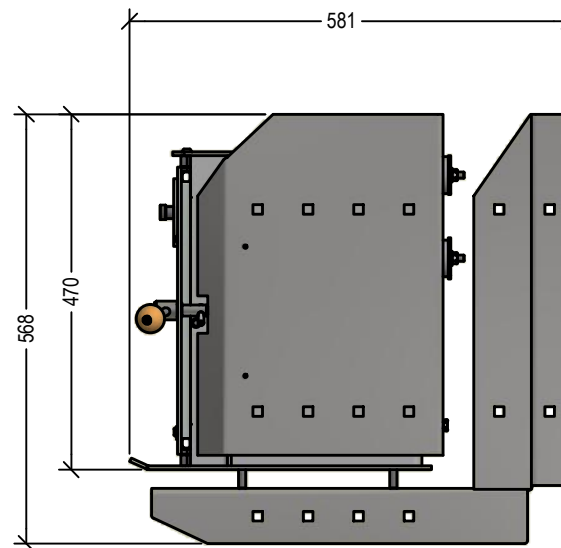


PLAN VIEW



ELEVATION VIEW



SIDE VIEW

Warmington Compact Studio Fire - Wall Mounted

Warmington Compact Studio Fire

Fire & Flue System to comply with AS/NZS 2918:2001.

Due to continued product improvement, Warmington Ind LTD reserves the right to change product specifications without prior notification.

Read all the Instructions carefully before commencing the Installation. Failure to follow these instructions may result in a fire hazard and void the warranty

For Specification See: www.warmington.co.nz

Copyright ©

Warmington Industries Ltd. PH: 09 273 9227 FAX: 09 273 9241 WEB: www.warmington.co.nz			
TITLE	COMPACT STUDIO FIREBOX - WALL MOUNTED		
DRAWN	EVEREST	DATE	22/06/21
SCALE	NOT TO SCALE	REVISION	01

Warmington Compact Studio Fire - Wall Mounted

Straight Wall Installation.

SITUATION 1 - Combustible Clearances

Warmington 3.6m Freestanding Fluekit(1.2-2.4m Combo).

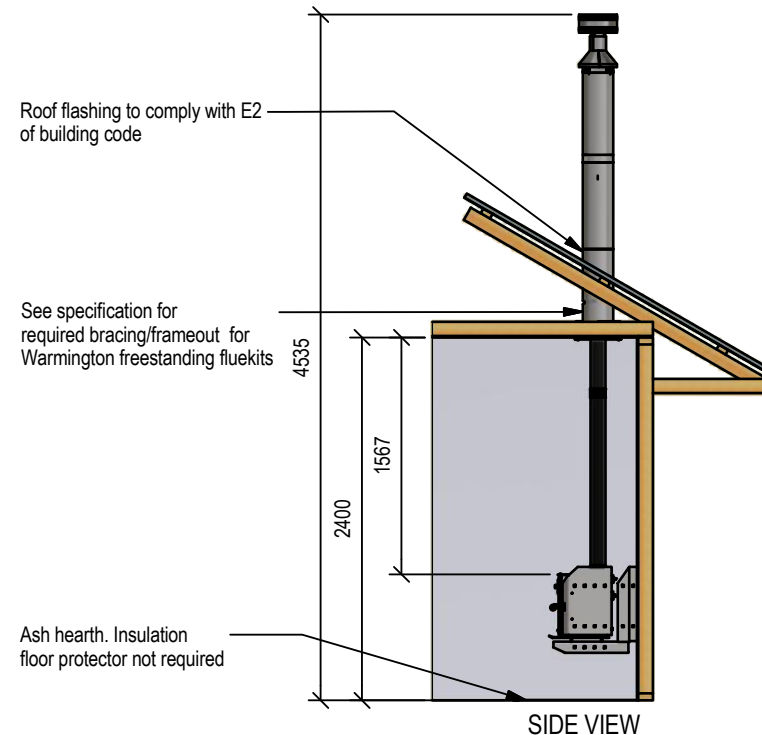
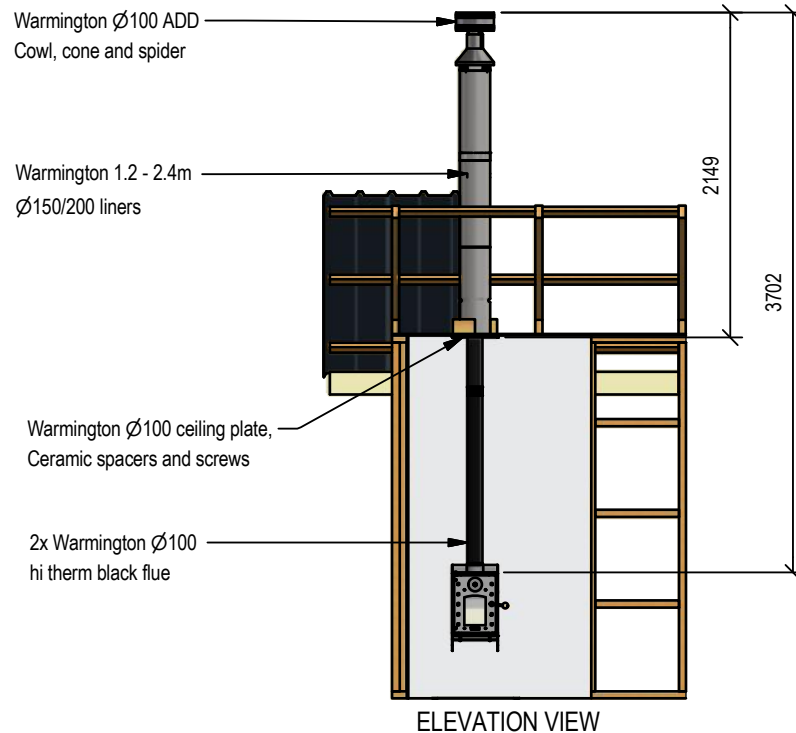
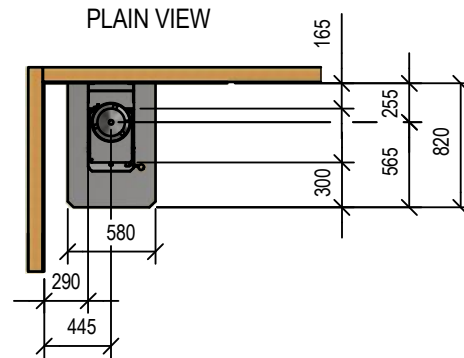
Fire & Flue System to comply with AS/NZS 2918:2001.

Due to continued product improvement, Warmington Ind LTD reserves the right to change product specifications without prior notification.

Read all the Instructions carefully before commencing the Installation. Failure to follow these instructions may result in a fire hazard and void the warranty

For Specification See: www.warmington.co.nz

Copyright ©



Warmington Industries Ltd. PH: 09 273 9227 FAX: 09 273 9241 WEB: www.warmington.co.nz			
TITLE COMPACT STUDIO FIRE - STRAIGHT INSTALLATION - SITUATION 1			
DRAWN	EVEREST	DATE	24/06/21
SCALE	NOT TO SCALE	REVISION	01

Warmington Compact Studio Fire - Wall Mounted

Straight Wall Installation.

SITUATION 2 - Non-Combustible Clearances

Warmington 3.6m Freestanding Fluekit(1.2-2.4m Combo).

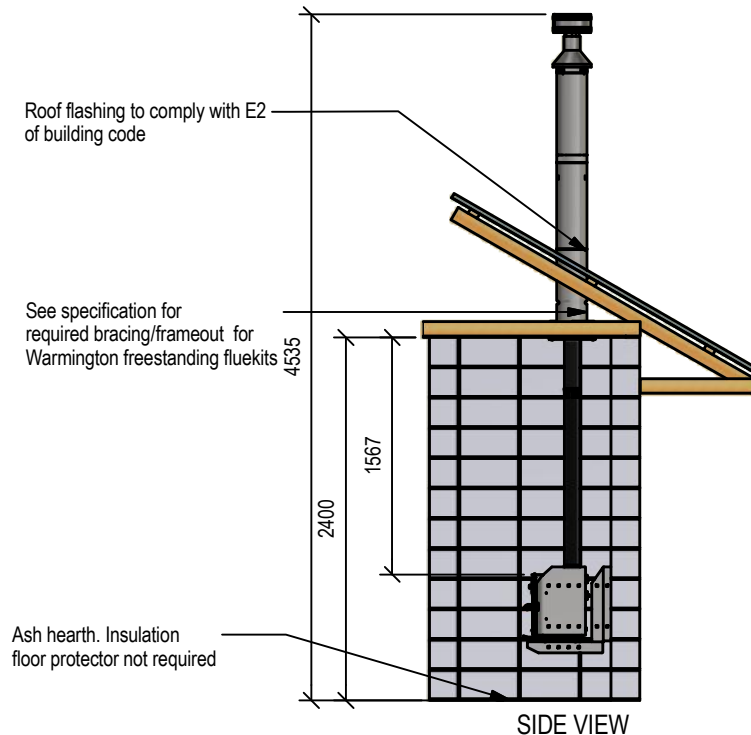
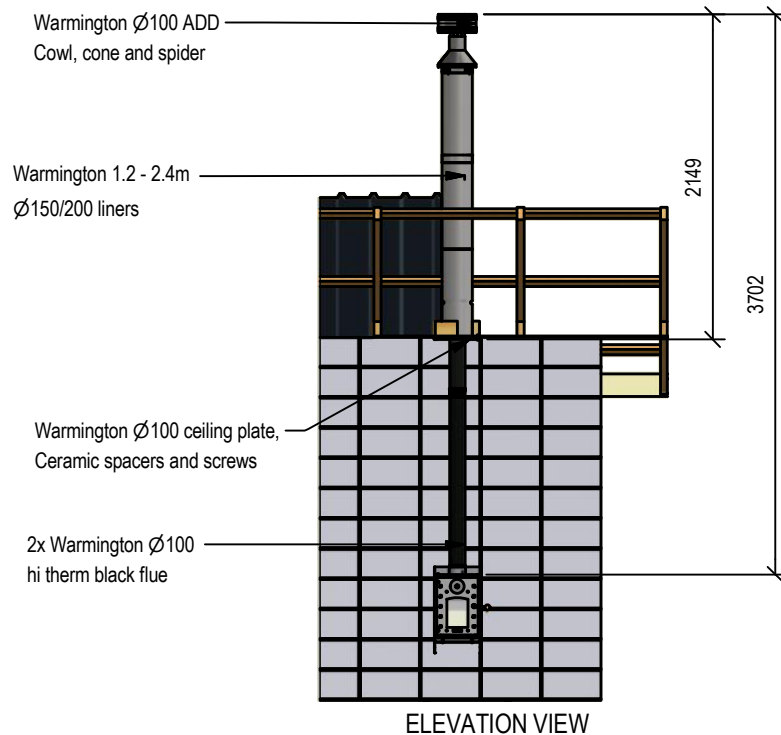
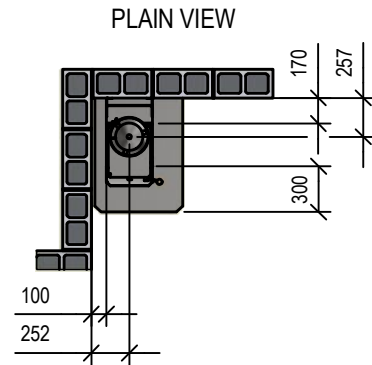
Fire & Flue System to comply with AS/NZS 2918:2001.

Due to continued product improvement, Warmington Ind LTD reserves the right to change product specifications without prior notification.

Read all the Instructions carefully before commencing the Installation. Failure to follow these instructions may result in a fire hazard and void the warranty

For Specification See: www.warmington.co.nz

Copyright ©



Warmington Industries Ltd. PH: 09 273 9227 FAX: 09 273 9241 WEB: www.warmington.co.nz			
TITLE COMPACT STUDIO FIRE - STRAIGHT INSTALLATION - SITUATION 2			
DRAWN	EVEREST	DATE	24/06/21
SCALE	NOT TO SCALE	REVISION	01

Warmington Compact Studio Fire - Wall Mounted

Corner Installation.

SITUATION 1 - Combustible Clearances

Warmington 3.6m Freestanding Fluekit(1.2-2.4m Combo).

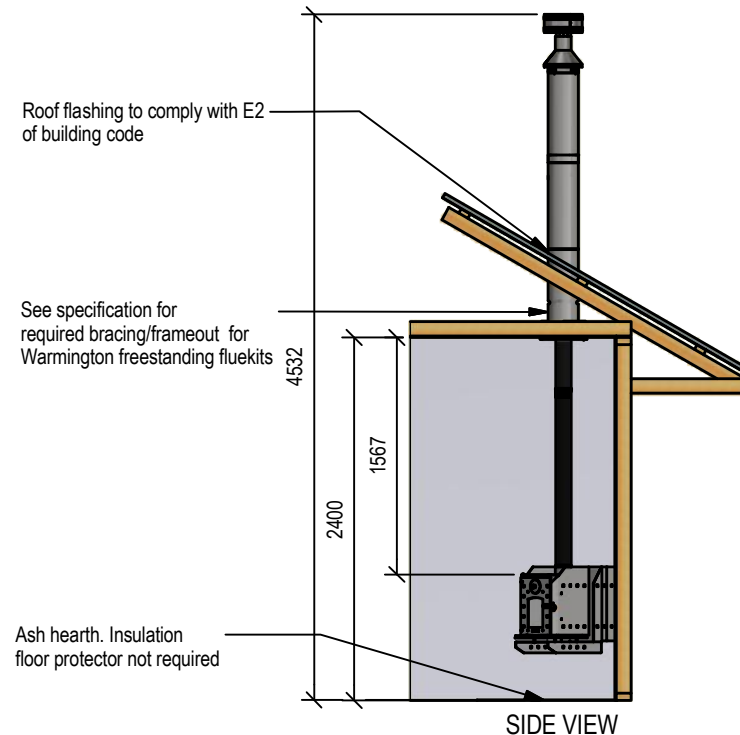
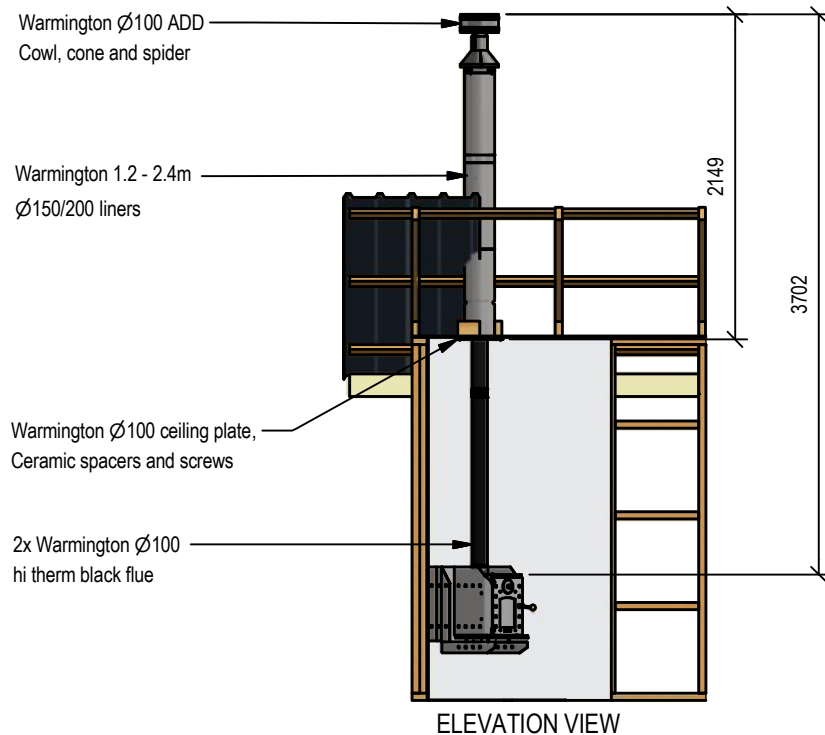
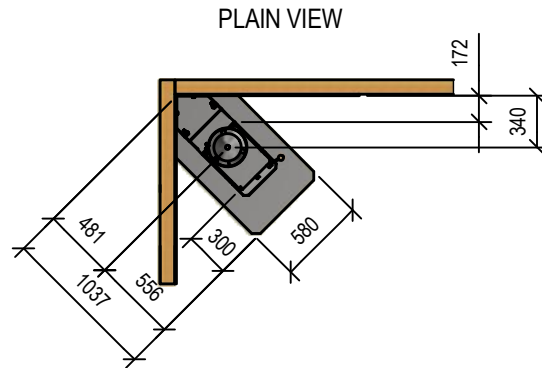
Fire & Flue System to comply with AS/NZS 2918:2001.

Due to continued product improvement, Warmington Ind LTD reserves the right to change product specifications without prior notification.

Read all the Instructions carefully before commencing the Installation. Failure to follow these instructions may result in a fire hazard and void the warranty

For Specification See: www.warmington.co.nz

Copyright ©



Warmington Industries Ltd. PH: 09 273 9227 FAX: 09 273 9241 WEB: www.warmington.co.nz			
TITLE COMPACT STUDIO FIRE - CORNER INSTALLATION - SITUATION 1			
DRAWN	EVEREST	DATE	25/06/21
SCALE	NOT TO SCALE	REVISION	01

Warmington Compact Studio Fire - Wall Mounted

Corner Installation.

SITUATION 2 - Non-Combustible Clearances

Warmington 3.6m Freestanding Fluekit(1.2-2.4m Combo).

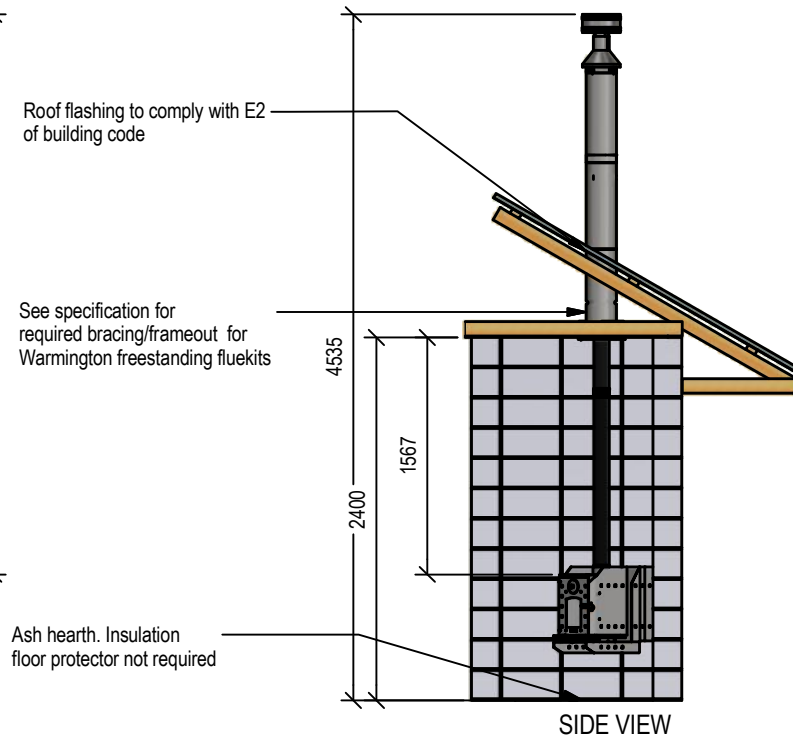
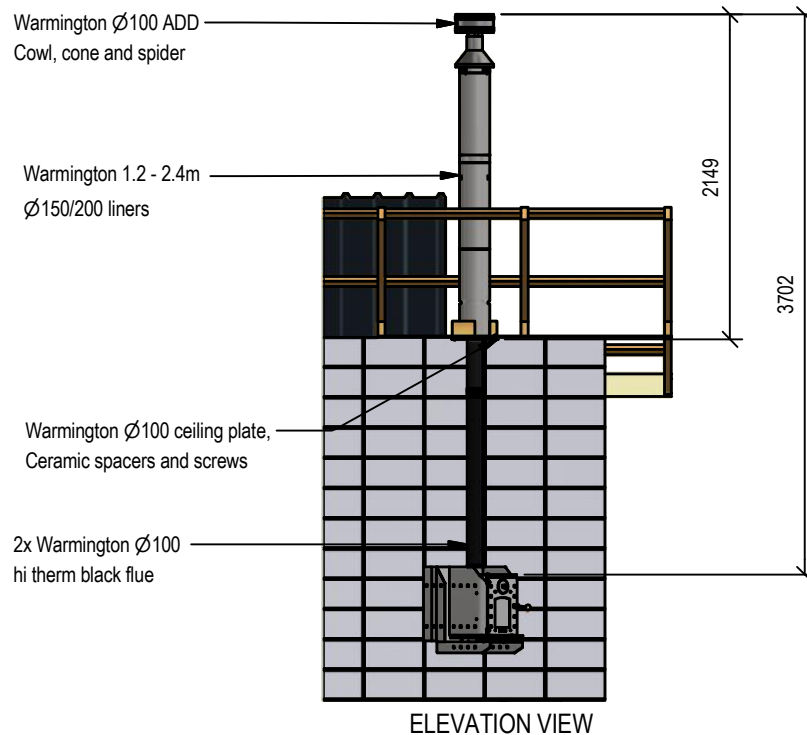
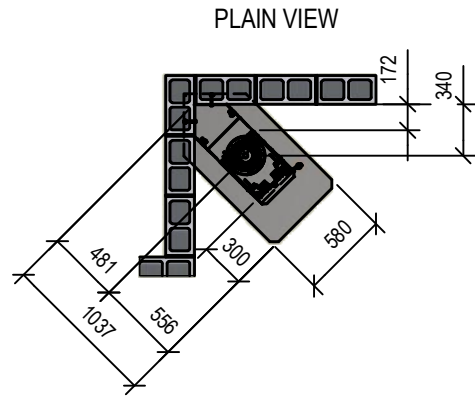
Fire & Flue System to comply with AS/NZS 2918:2001.

Due to continued product improvement, Warmington Ind LTD reserves the right to change product specifications without prior notification.

Read all the Instructions carefully before commencing the Installation. Failure to follow these instructions may result in a fire hazard and void the warranty

For Specification See: www.warmington.co.nz

Copyright ©



Warmington Industries Ltd. PH: 09 273 9227 FAX: 09 273 9241 WEB: www.warmington.co.nz			
TITLE COMPACT STUDIO FIRE - CORNER INSTALLATION - SITUATION 2			
DRAWN	EVEREST	DATE	25/06/21
SCALE	NOT TO SCALE	REVISION	01