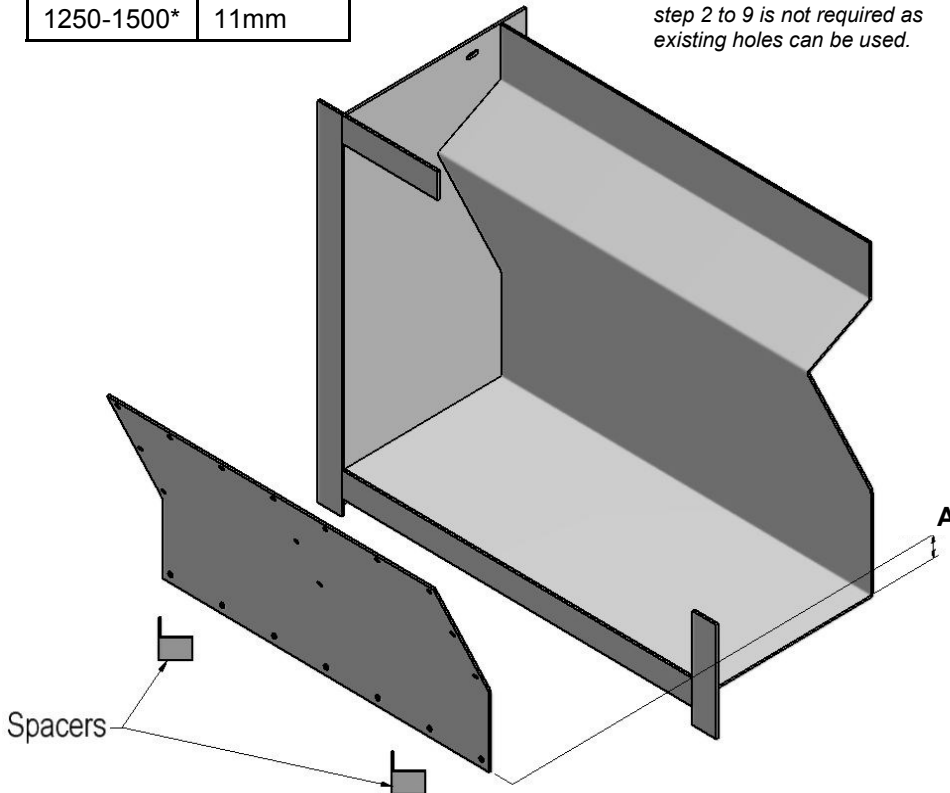


Replacement fireback fitting Instructions

Spacers	A
440-780T	40mm
900	42mm
1100	48mm
1250-1500*	11mm

**Note: If the 1250 or 1500 was installed with a commercial back step 2 to 9 is not required as existing holes can be used.*



Procedure	
1.	Place plate in position, prop up with spacers. (plate should be centered, with the fold line aligned with the fold line of the fire).
2.	Spot the top and bottom centre holes with the 10mm drill supplied.
3.	Drill out the spotted holes with the 3.3mm pilot drill (supplied).
4.	Remove plate and drill out the spotted hole with the 6.7mm drill (supplied).
5.	Tap the 2 holes with the M8 gun nose tap (supplied).
6.	Fit the plate and fix into position with two M8 button head screws supplied and spot all the holes with the 10mm drill.
7.	Remove the plate and drill all the spotted holes with the 3.3mm drill.
8.	Drill the 3.3mm holes out to 6.7mm.
9.	Tap out all the holes with the M8 tap.
10.	Fit the plate and fix into position with the button head screws.

Recommended Tool list - Not Supplied*	
Tapping Paste (Some Supplied)	
5mm Allen Key	
5mm Ratchet Allen Key	
Battery Drill (for tapping)	
Power Drill (For Spotting)	
Power Drill (For Pilot and Drilling)	
Extension Leads	
Brush and Shovel	
Bucket	
Blanket	
Masking Tape	
High Temp Paint (Satin BLK)	
News Paper	
Trimmed Bricks	

Check List - Supplied*		
Replacement Back	1	
M8 x 20mm Button Head Screws	**	
M8 x 35mm Button Head Screws	8	
10 mm Drill (Spotting Drill)	1	
6.7 mm Drill (Tapping Drill)	1	
3.3 mm Drill (Pilot Drill)	2	
M8 Gun Nose Tap	1	
Height Spacers	2	
Little Bag of Tapping Paste	1	
<i>**Same as number of holes in plate</i>		
Packed By		

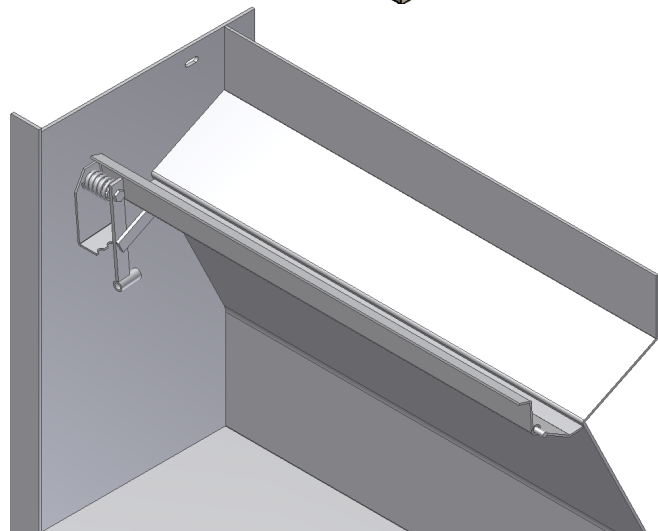
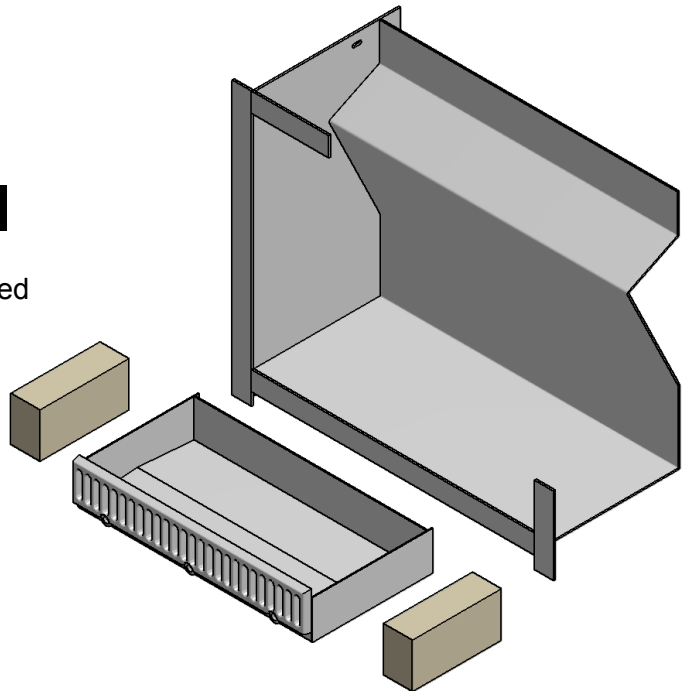
Notes:	
Bricks need to be cut to suit (trim approx 10mm).	
Care is to be taken when drilling and tapping holes as stiffeners are positioned at the back of the firebox.	

METHOD OF INSTALLATION*

PRE PREPARATION

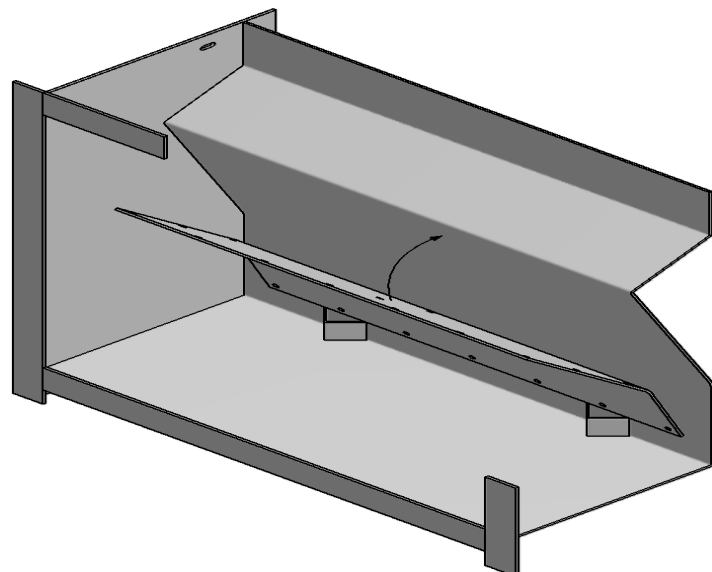
- Allow approx 2.5 to 3 Hours
- Note the recommended tool list—Not supplied
- Remove Ash Pan, Bricks and clean out fire place
- Brush or wire brush the existing fire back to clean surface

- NOTE: Damper may need to be opened and then close to allow replacement back into position
- Place the spacers in the bottom of the fire



STEP 1

- Rest new back onto the spacers and offer into position as shown
- Space the replacement back equal left to right. Centred.



**Note: If the 1250 or 1500 was installed with a commercial back step 2 to 9 is not required as existing holes can be used.*

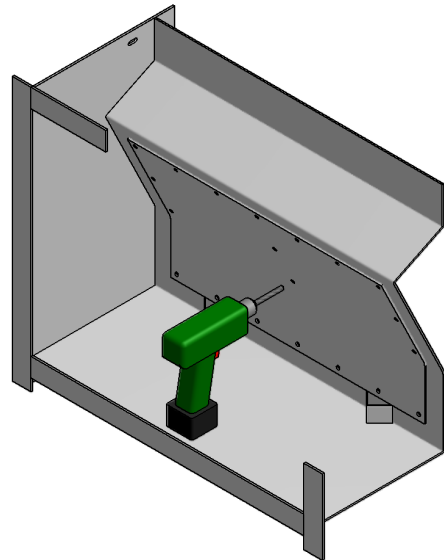
STEPS 2 TO 5*

NOTE:

Care is to be taken when drilling the fire back, when the drill breaks through the metal, to not break the drill bit.

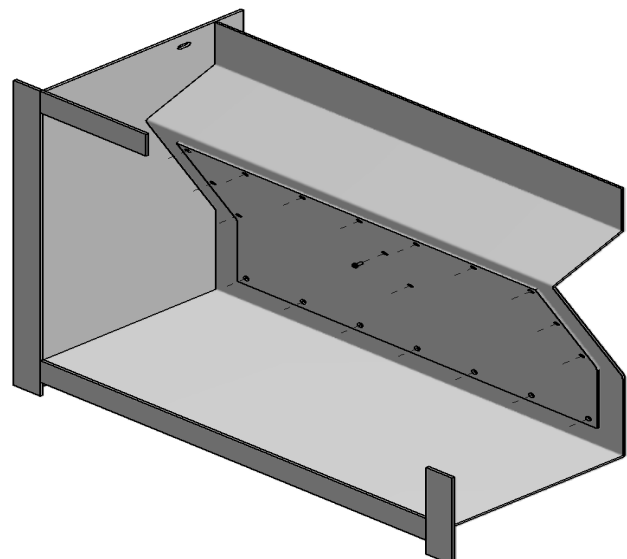
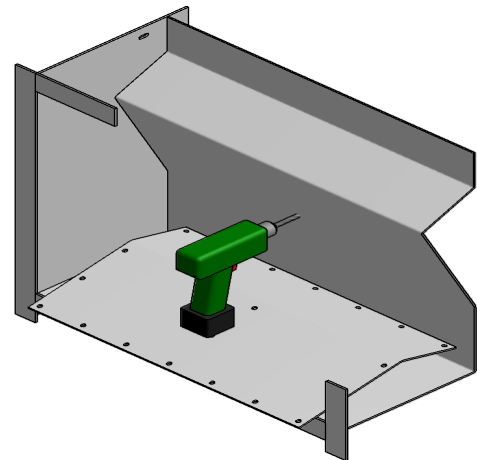
There are gussets in the existing fire back that may foul the drill bit.

- Spot centre hole with spotting drill. This is to mark the centre only, do not drill with 10mm drill bit.
- Remove replacement Back and Pilot drill centre mark with 3.3mm drill (Pilot)
- Drill 6.7mm hole
- Using Gun Nose tap M8 Tap 6.7mm hole to M8 (Tapping paste may help for ease of cutting and ensure drill is set to low speed)



STEPS 6 TO 10*

- Replace the back into the position and bolt into finished position using M8 Button Head Cap Screws provided
- If the fire back is buckled then nip the bolt to hold the back in place
- Remove the spacers from the base that support the Replacement back.
- Starting from the centre and moving out, spot drill, 3.3mm pilot drill, 6.7mm drill, 8mm tap and fit button head cap screw. A 35mm Button Head Cap Screw may be required to pull the replacement back and the existing back together. Using a Ratchet and in hex cap socket or Allen key to tighten the Button head cap screws.
- It may take a few tightens around the Cap Screws to get the fire back into position.
- Once completed replace the bricks into the left and right hand sides. The bricks may need to be trimmed to length to fit.



**Note: If the 1250 or 1500 was installed with a commercial back step 2 to 9 is not required as existing holes can be used.*