

Warmington Open Wood Fire

SN 1250 Firebox Double Flue

NOTE: Requires Hebel Enclosure

Fire, Flue System to Comply with AS/NZS 2918:2001

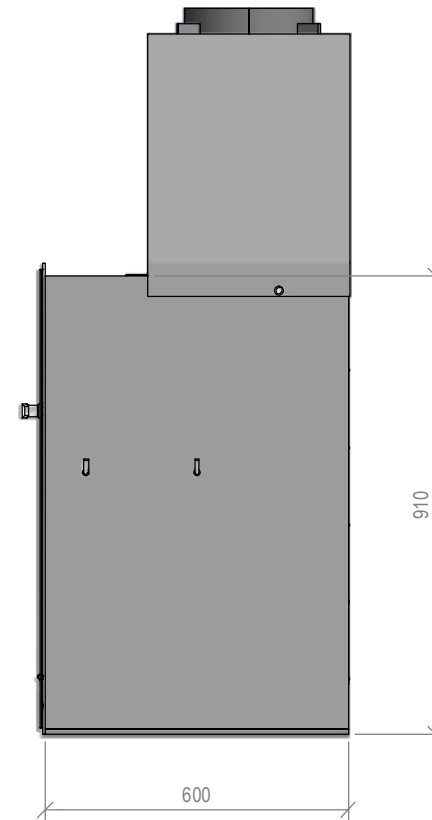
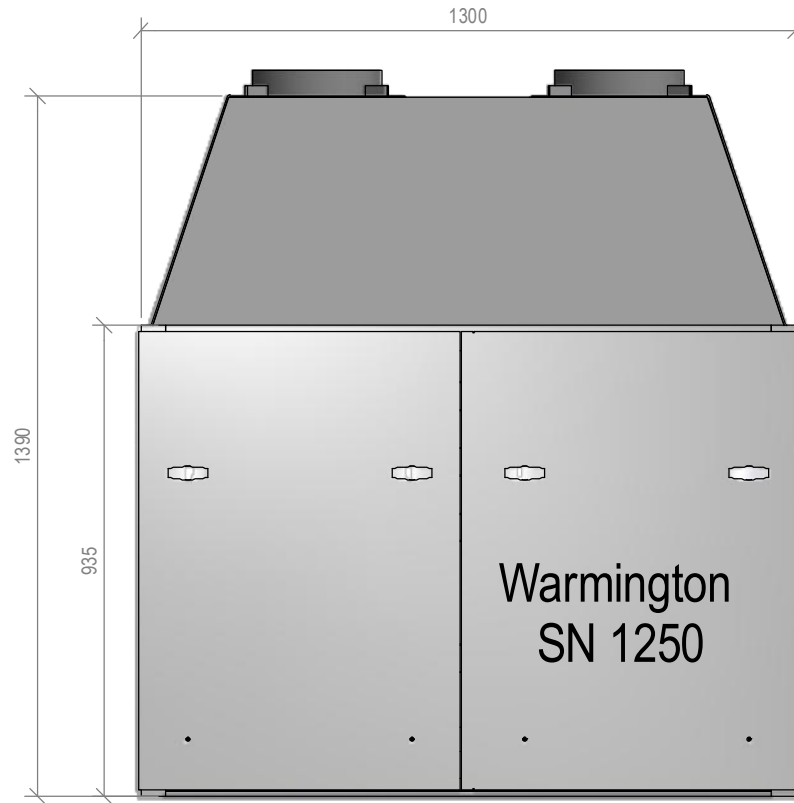
Due to continued product improvement, Warmington Ind LTD reserves the right to change product specifications without prior notification.

Read all the instructions carefully before commencing the installation. Failure to follow these instructions may result in a fire hazard and void the warranty.

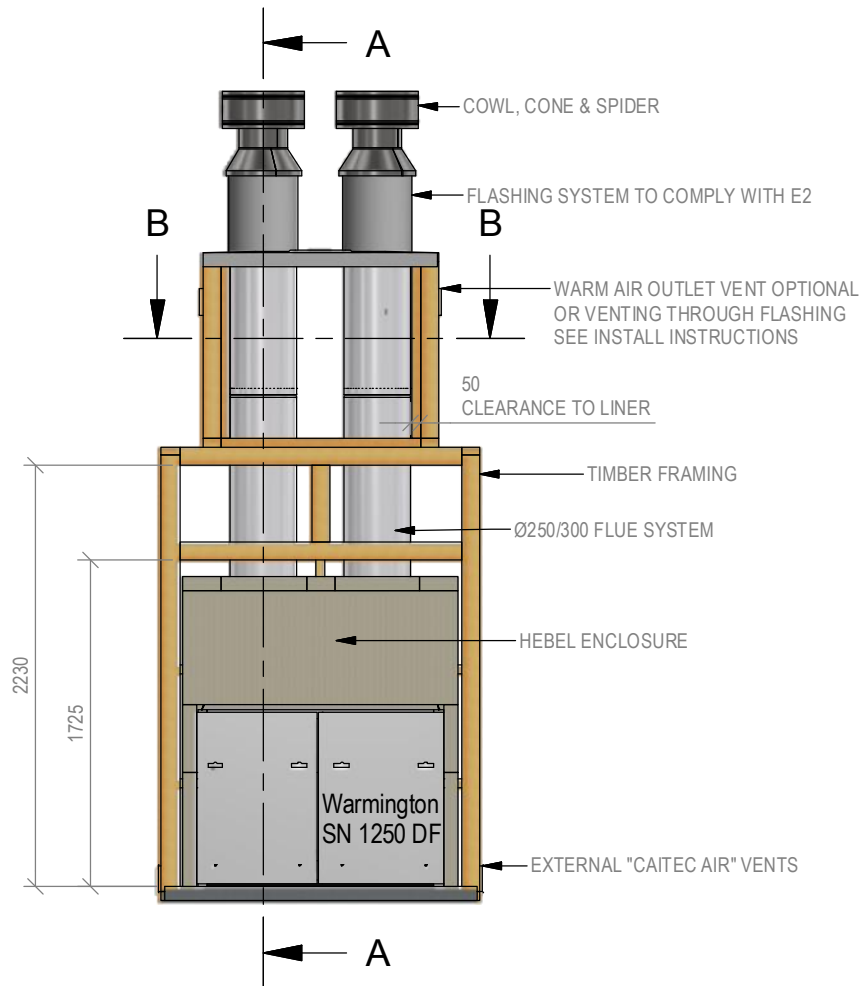
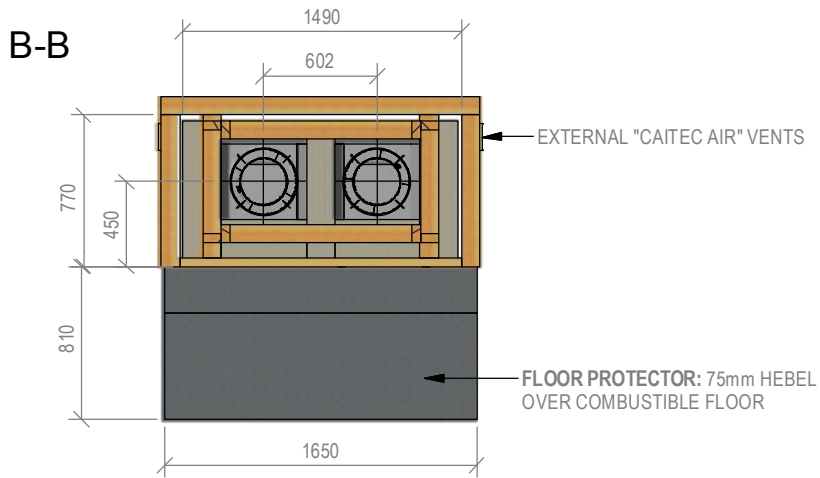
For Specification See: www.warmington.co.nz

Copyright ©

NOTE: Engineering calculations may be required



Warmington Industries Ltd.	
PH: 09 273 9227 FAX: 09 273 9241 WEB: www.warmington.co.nz	
TITLE	SN 1250 Double Flue Firebox
DRAWN	Robert
SCALE	1/15
DATE	26/04/18
REVISION	01



Warmington Open Wood Fire

SN 1250 Firebox Double Flue Timber Framing

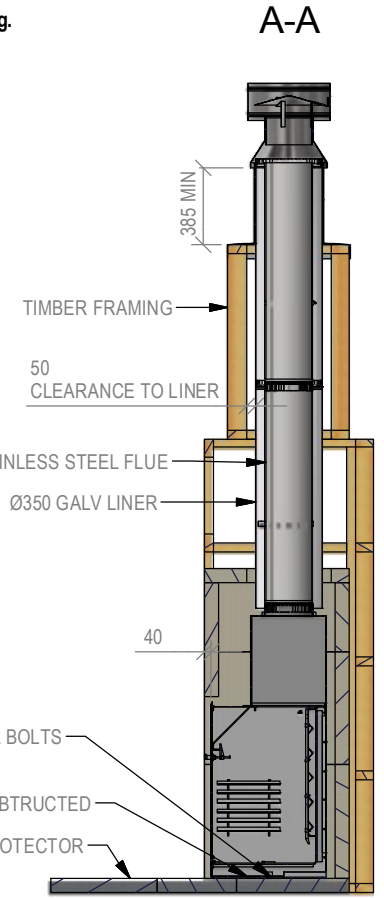
NOTE: Requires Hebel Enclosure
 Fire, Flue System to Comply with ASNZS 2918:2001
Due to continued product improvement, Warmington Ind LTD reserves the right to change product specifications without prior notification.
 Read all the instructions carefully before commencing the installation. Failure to follow these instructions may result in a fire hazard and void the warranty.
 For Specification See: www.warmington.co.nz
 Copyright ©

NOTE: Engineering calculations may be required

IMPORTANT NOTE:
 WHERE AN INTERNAL WALL BOARD FINISH IS REQUIRED AROUND THE FIREPLACE, ENSURE ALLOWANCE IS MADE TO PLACE NON COMBUSTIBLE INTERNAL WALL LINING (e.g. PROMINA ETERPAN, SUPALUX) TO COVER THE EXTENT OF THE HEBEL BLOCK SURROUND

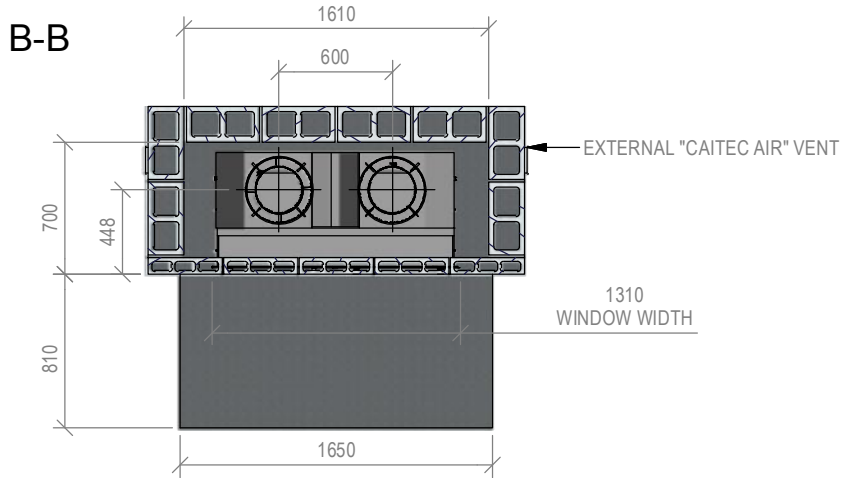
DIRECTLY TOUCHING THE FIREBOX WITH ANY BOARD OR PLASTER MAY CAUSE CRACKING FROM HEAT EXPANSION.

ALLOW 3mm MINIMUM SPACE AWAY FROM THE FIREBOX.



Note:
 WARMINGTON CAITEC AIR IS REQUIRED
 SEE SPECIFIC INSTALL INSTRUCTIONS

Warmington Industries Ltd.	
PH: 09 273 9227 FAX: 09 273 9241 WEB: www.warmington.co.nz	
TITLE SN 1250 Double Flue Firebox Timber Framing	DATE 26/04/18
DRAWN Robert	REVISION 01
SCALE 1/40	



Warmington Open Wood Fire

SN 1250 Firebox Double Flue Block Enclosure

NOTE: Requires Hebel Enclosure
Fire, Flue System to Comply with ASNZS 2918:2001

Due to continued product improvement, Warmington Ind LTD reserves the right to change product specifications without prior notification.

Read all the instructions carefully before commencing the installation. Failure to follow these instructions may result in a fire hazard and void the warranty.

For Specification See: www.warmington.co.nz

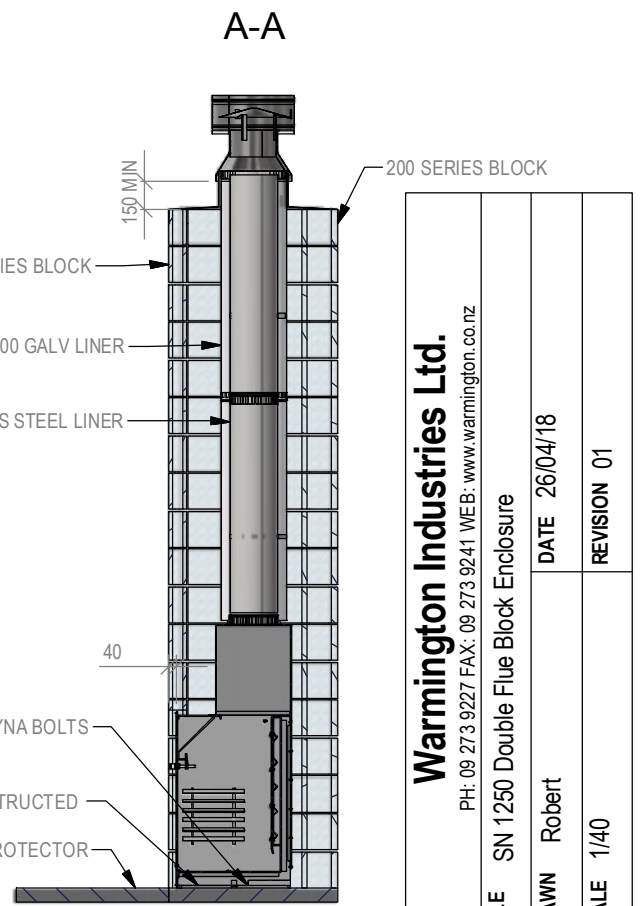
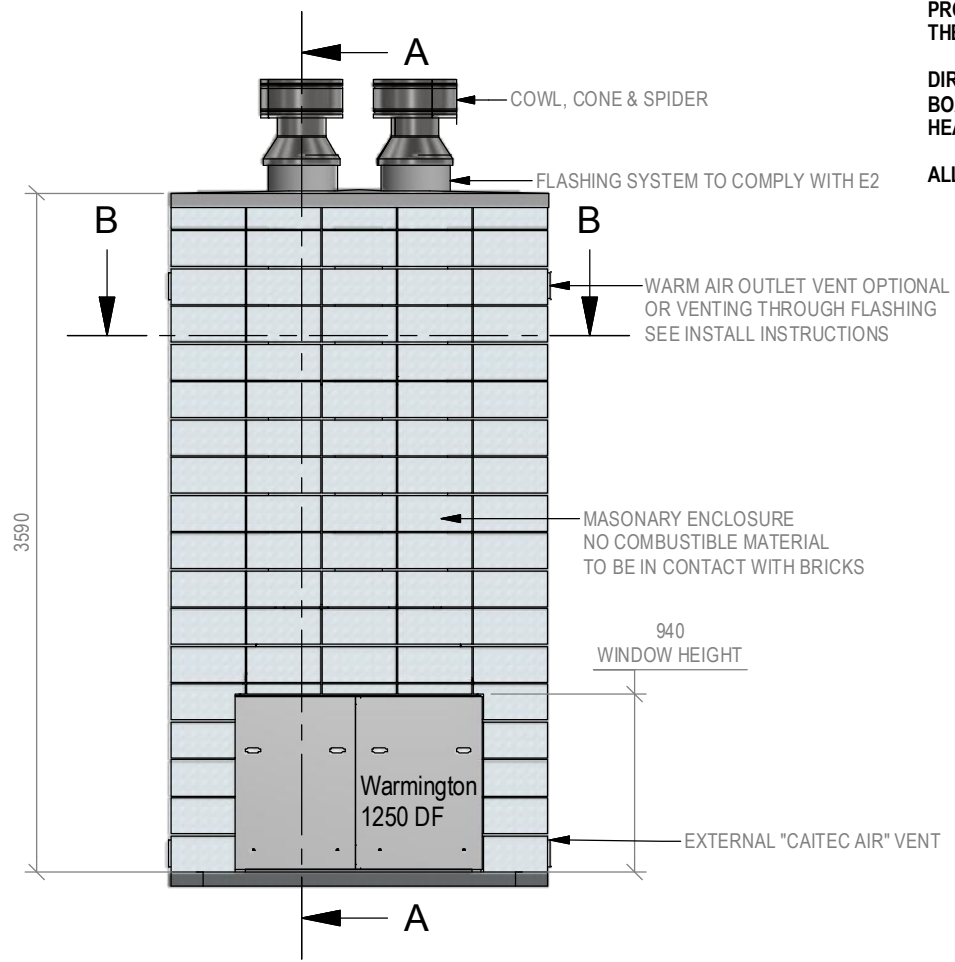
Copyright ©

NOTE: Engineering calculations may be required

IMPORTANT NOTE:
WHERE AN INTERNAL WALL BOARD FINISH IS REQUIRED ROUND THE FIREPLACE, ENSURE ALLOWANCE IS MADE TO PLACE NON COMBUSTIBLE INTERNAL WALL LINING (e.g. PROMINA ETERPAN, SUPALUX) TO COVER THE EXTENT OF THE HEEL BLOCK SURROUND

DIRECTLY TOUCHING THE FIREBOX WITH ANY BOARD OR PLASTER MAY CAUSE CRACKING FROM HEAT EXPANSION.

ALLOW 3mm MINIMUM SPACE AWAY FROM THE FIREBOX.



Warmington Industries Ltd.	
PH: 09 273 9227 FAX: 09 273 9241 WEB: www.warmington.co.nz	
TITLE	SN 1250 Double Flue Block Enclosure
DRAWN	Robert
DATE	26/04/18
SCALE	1/40
REVISION	01

Note:
WARMINGTON CAITEC AIR IS REQUIRED
SEE SPECIFIC INSTALL INSTRUCTIONS