

Warmington Traditional Brick Open Fire

TF 2000 Firebox and ACC Enclosure

NOTE: Requires ACC Enclosure

Fire, Flue System to Comply with AS/NZS 2918:2001

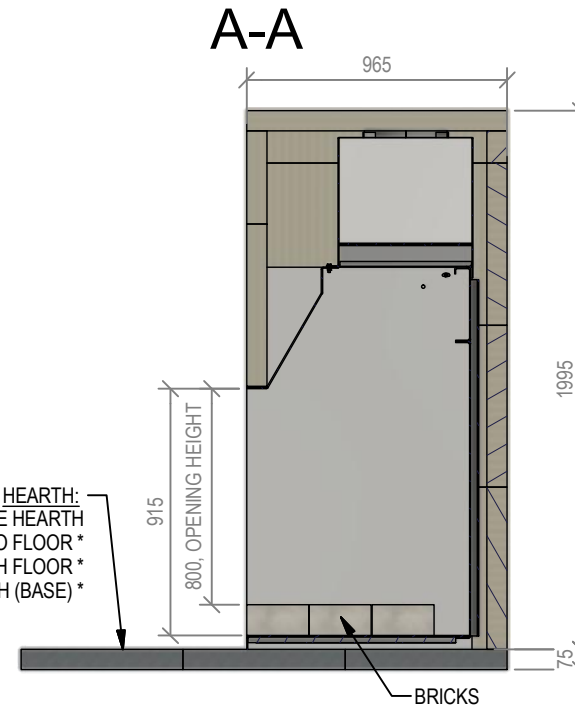
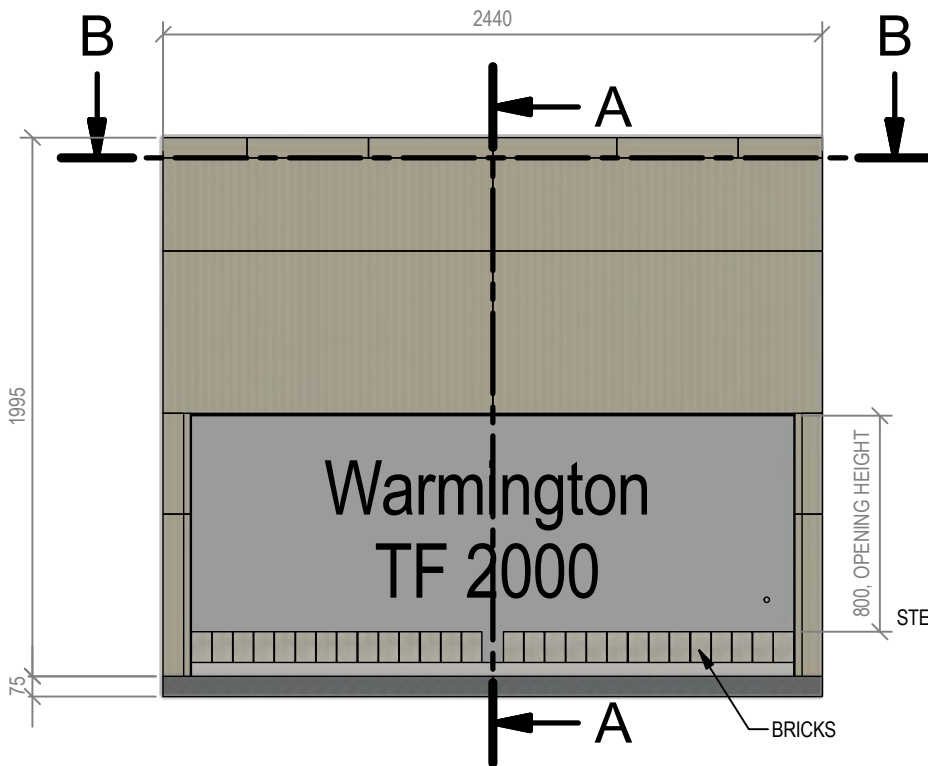
Due to continued product improvement, Warmington Ind LTD reserves the right to change product specifications without prior notification.

Read all the Instructions carefully before commencing the Installation. Failure to follow these instructions may result in a fire hazard and void the warranty

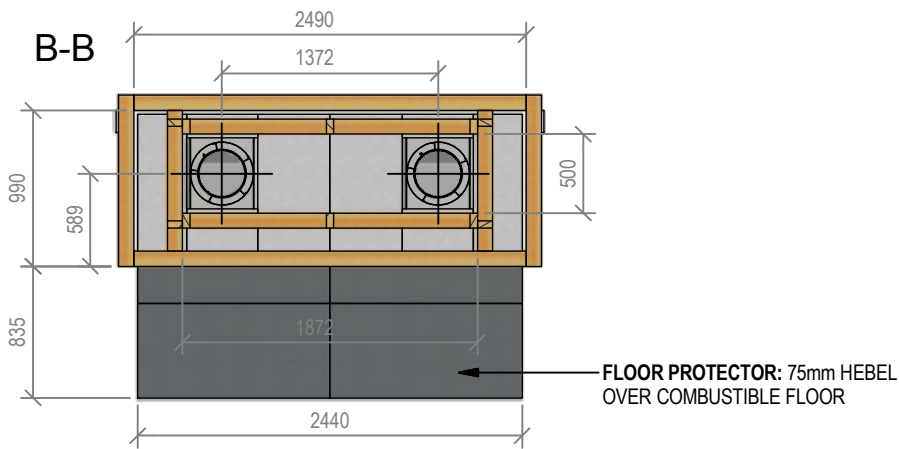
For Specification See: www.warmington.co.nz

Copyright ©

*Note: Combustibles include timber, adhesives, plastics, etc - refer to AS/NZS 2918:2001



Warmington Industries Ltd.			
PH: 09 273 9227 FAX: 09 273 9241 WEB: www.warmington.co.nz			
TITLE	TF 2000 FIREBOX AND ACC ENCLOSURE		
DRAWN	ROBERT	DATE	27/08/15
SCALE	NOT TO SCALE	REVISION	01



Warmington Traditional Brick Open Fire

TF 2000 Timber Framing

NOTE: Requires ACC Enclosure

Fire, Flue System to Comply with AS/NZS 2918:2001

Due to continued product improvement, Warmington Ind LTD reserves the right to change product specifications without prior notification.

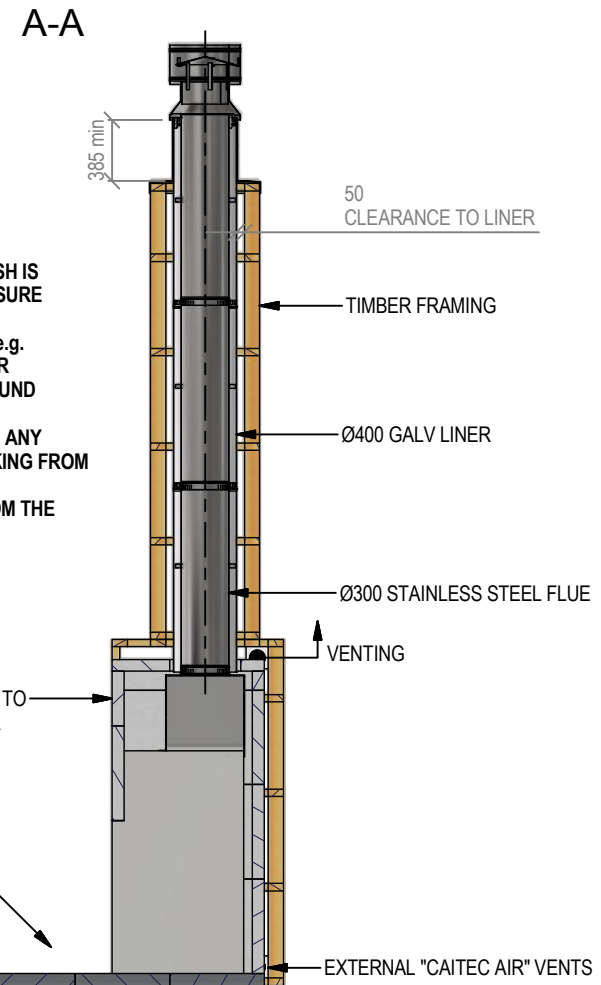
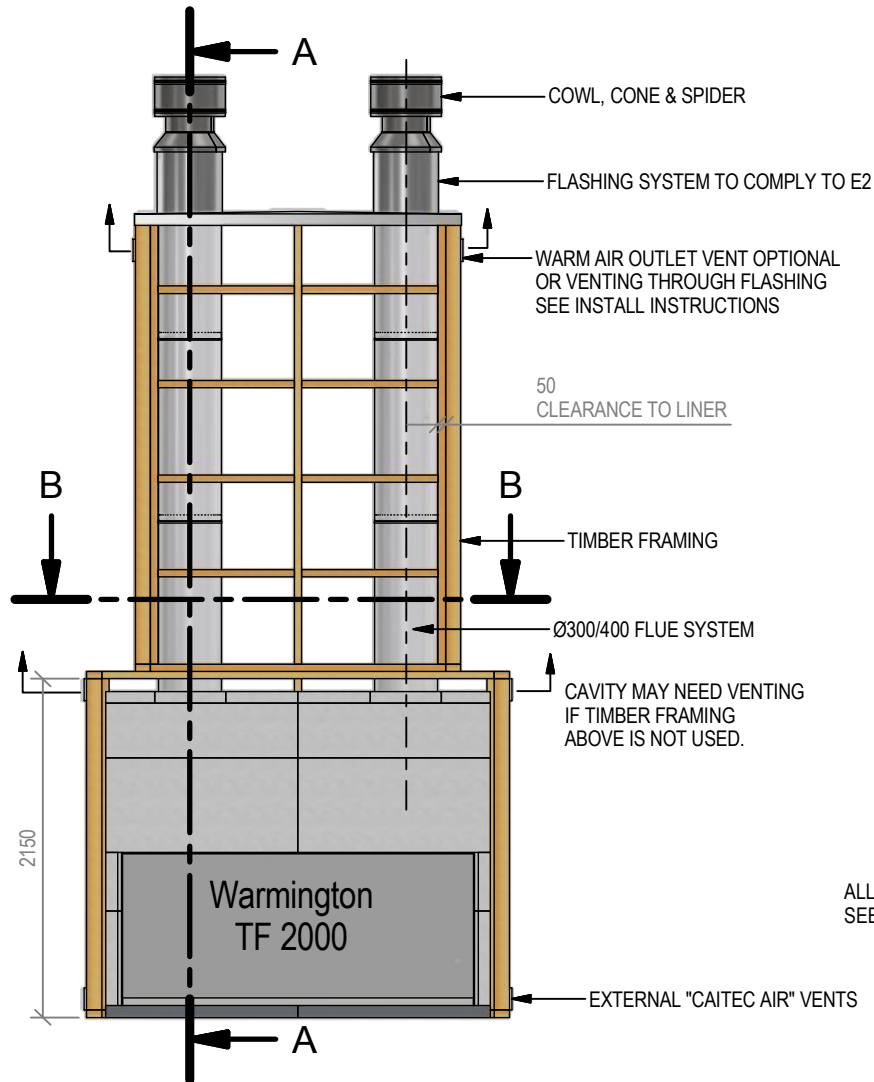
Read all the Instructions carefully before commencing the Installation. Failure to follow these

instructions may result in a fire hazard and void the warranty

For Specification See: www.warmington.co.nz

Copyright ©

*Note: Combustibles include timber, adhesives, plastics, etc - refer to AS/NZS 2918:2001



IMPORTANT NOTE:
WHERE AN INTERNAL WALL BOARD FINISH IS REQUIRED AROUND THE FIREPLACE, ENSURE ALLOWANCE IS MADE TO PLACE NON COMBUSTIBLE INTERNAL WALL LINING (e.g. PROMINA ETERPAN, SUPALUX) TO COVER THE EXTENT OF THE ACC BLOCK SURROUND

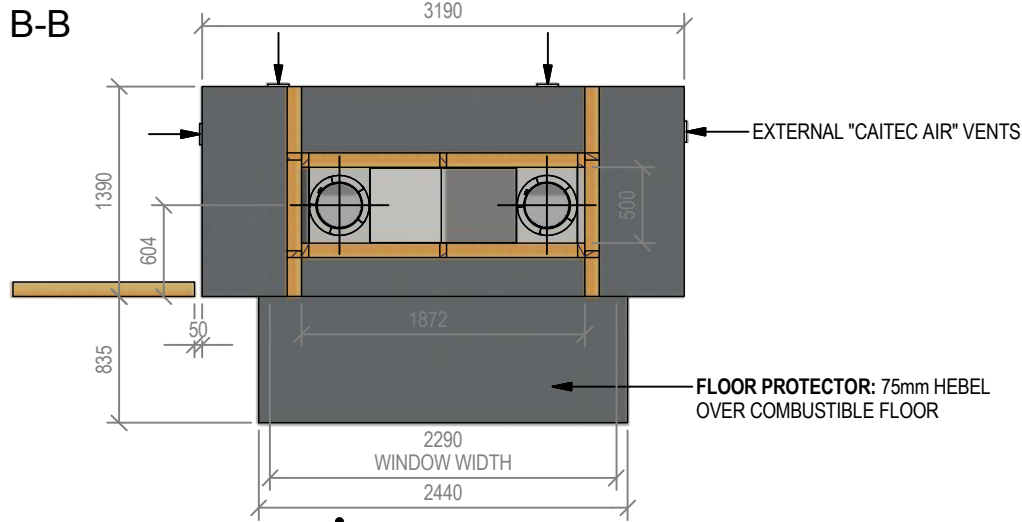
DIRECTLY TOUCHING THE FIREBOX WITH ANY BOARD OR PLASTER MAY CAUSE CRACKING FROM HEAT EXPANSION
ALLOW 3mm MINIMUM SPACE AWAY FROM THE FIREBOX

NO COMBUSTABLE MATERIAL TO BE USED IN OR ON THIS AREA

ALLOW FINISHING ON FLOOR PROTECTOR SEE INSTALL DETAILS

NOTE:
WARMINGTON CAITEC AIR IS REQUIRED SEE SPECIFIC INSTALL INSTRUCTION

Warmington Industries Ltd.			
PH: 09 273 9227 FAX: 09 273 9241 WEB: www.warmington.co.nz			
TITLE	TF 2000 TIMBER FRAMING	DATE	27/08/15
DRAWN	ROBERT	REVISION	01
SCALE	NOT TO SCALE		



Warmington Traditional Brick Open Fire

TF 2000 Block Enclosure - No ACC

NOTE: Requires ACC Enclosure

Fire, Flue System to Comply with AS/NZS 2918:2001

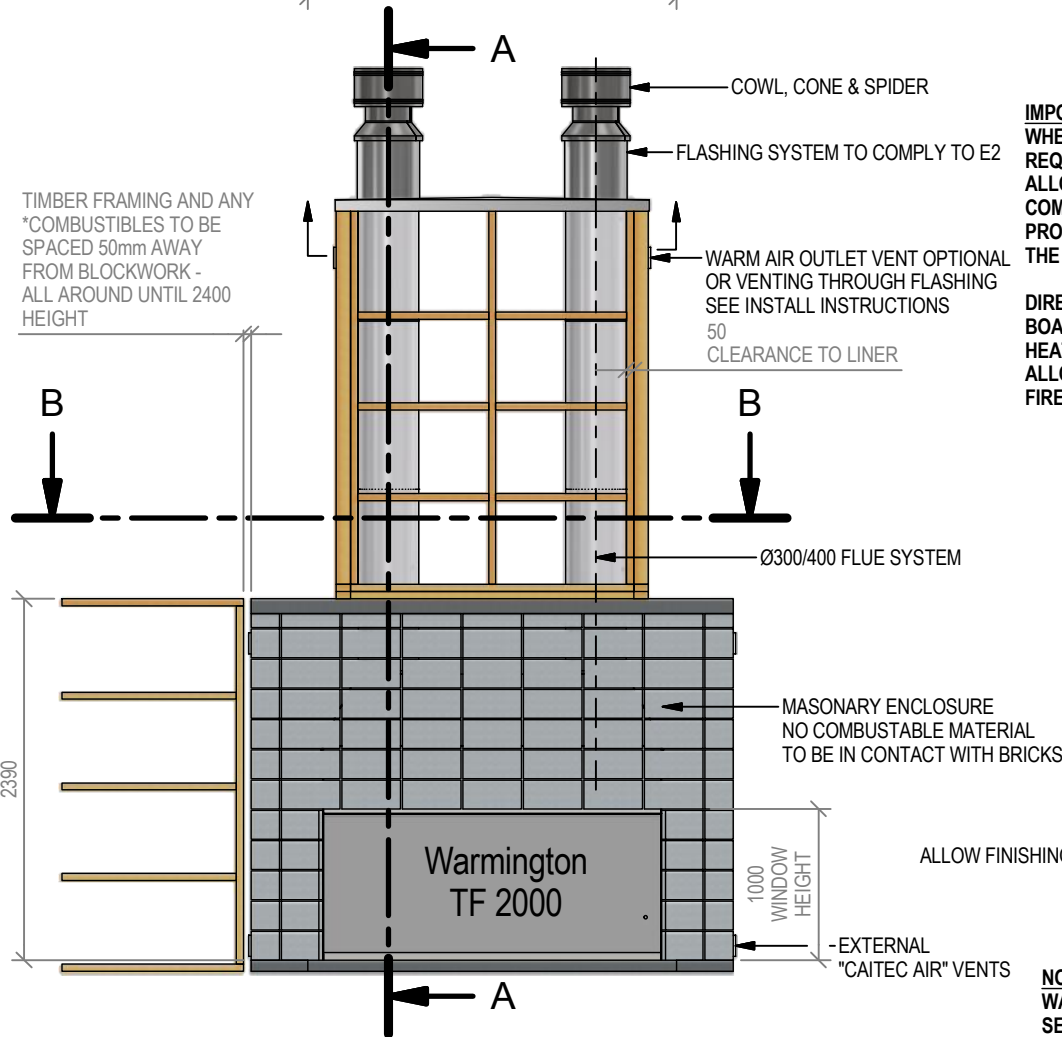
Due to continued product improvement, Warmington Ind LTD reserves the right to change product specifications without prior notification.

Read all the Instructions carefully before commencing the Installation. Failure to follow these instructions may result in a fire hazard and void the warranty

For Specification See: www.warmington.co.nz

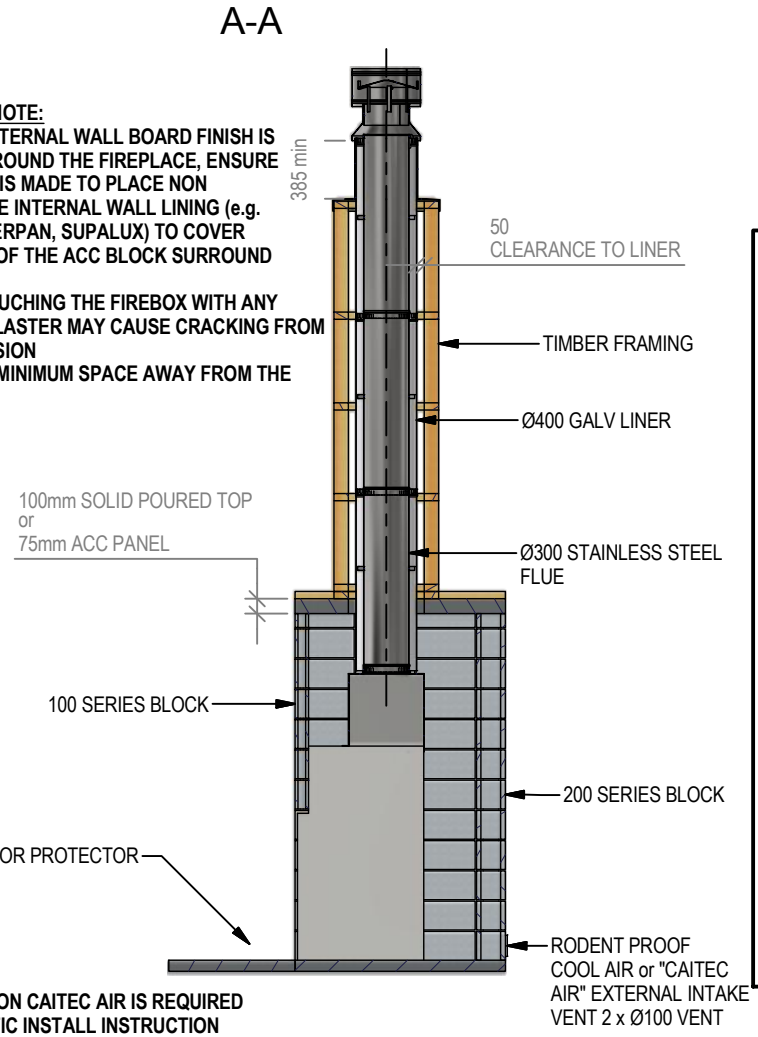
Copyright ©

*Note: Combustibles include timber, adhesives, plastics, etc - refer to AS/NZS 2918:2001



IMPORTANT NOTE:
WHERE AN INTERNAL WALL BOARD FINISH IS REQUIRED AROUND THE FIREPLACE, ENSURE ALLOWANCE IS MADE TO PLACE NON COMBUSTIBLE INTERNAL WALL LINING (e.g. PROMINA ETERPAN, SUPALUX) TO COVER THE EXTENT OF THE ACC BLOCK SURROUND

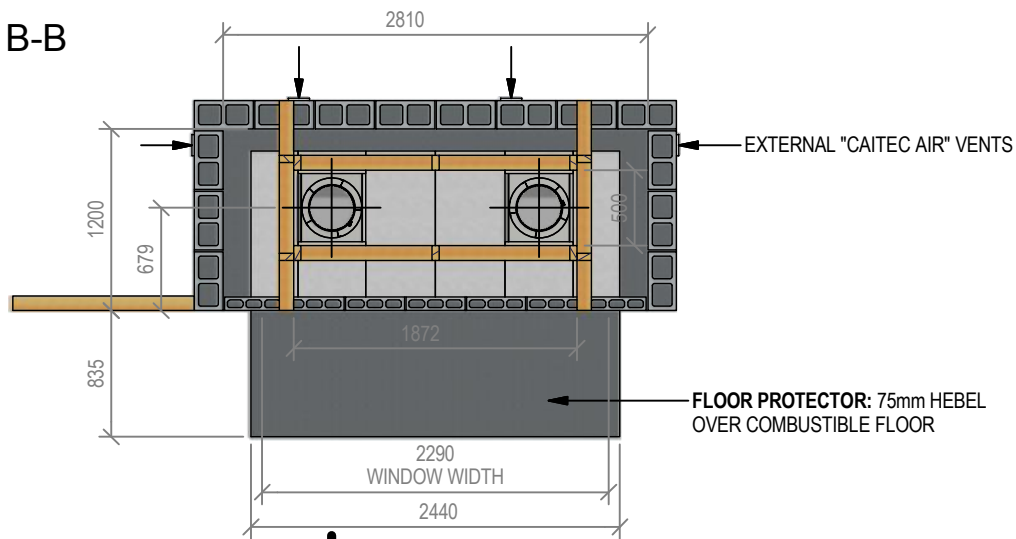
DIRECTLY TOUCHING THE FIREBOX WITH ANY BOARD OR PLASTER MAY CAUSE CRACKING FROM HEAT EXPANSION
ALLOW 3mm MINIMUM SPACE AWAY FROM THE FIREBOX



NOTE:
WARMINGTON CAITEC AIR IS REQUIRED
SEE SPECIFIC INSTALL INSTRUCTION

Warmington Industries Ltd.		PH: 09 273 9227 FAX: 09 273 9241 WEB: www.warmington.co.nz	
TITLE	TF 2000 BLOCK ENCLOSURE NO ACC	DATE	27/08/15
DRAWN	ROBERT	SCALE	NOT TO SCALE
REVISION	01		

B-B



Warmington Traditional Brick Open Fire

TF 2000 Block Enclosure With ACC

NOTE: Requires ACC Enclosure

Fire, Flue System to Comply with AS/NZS 2918:2001

Due to continued product improvement, Warmington Ind LTD reserves the right to change product specifications without prior notification.

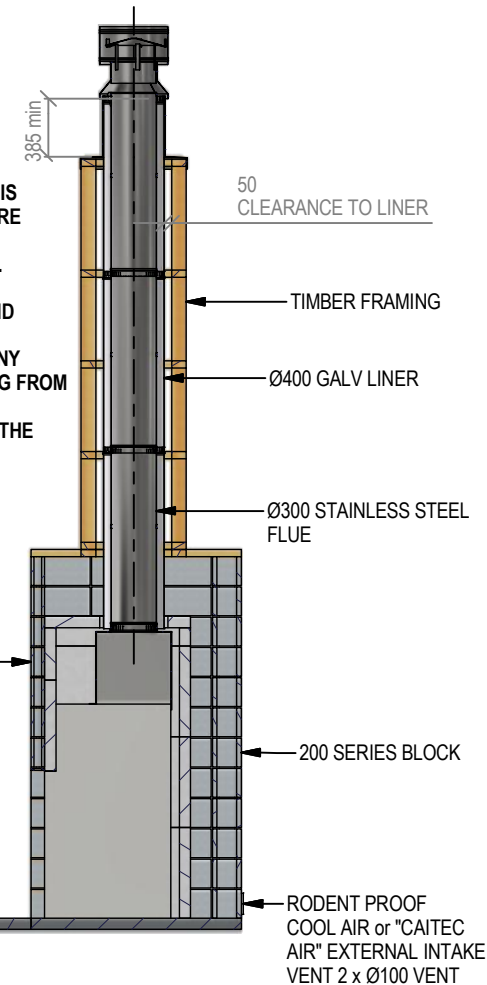
Read all the Instructions carefully before commencing the Installation. Failure to follow these instructions may result in a fire hazard and void the warranty

For Specification See: www.warmington.co.nz

Copyright ©

*Note: Combustibles include timber, adhesives, plastics, etc - refer to AS/NZS 2918:2001

A-A



IMPORTANT NOTE:
WHERE AN INTERNAL WALL BOARD FINISH IS REQUIRED AROUND THE FIREPLACE, ENSURE ALLOWANCE IS MADE TO PLACE NON COMBUSTIBLE INTERNAL WALL LINING (e.g. PROMINA ETERPAN, SUPALUX) TO COVER THE EXTENT OF THE ACC BLOCK SURROUND

DIRECTLY TOUCHING THE FIREBOX WITH ANY BOARD OR PLASTER MAY CAUSE CRACKING FROM HEAT EXPANSION
ALLOW 3mm MINIMUM SPACE AWAY FROM THE FIREBOX

NOTE:
WARMINGTON CAITEC AIR IS REQUIRED
SEE SPECIFIC INSTALL INSTRUCTION

NOTE:
TIMBER FRAMING CAN BE IN DIRECT CONTACT WITH BRICK ALCOVE

WARM AIR OUTLET VENT OPTIONAL OR VENTING THROUGH FLASHING SEE INSTALL INSTRUCTIONS
50 CLEARANCE TO LINER

WARM AIR OUTLET VENT OPTIONAL OR VENTING THROUGH FLASHING SEE INSTALL INSTRUCTIONS

MASONRY ENCLOSURE
NO COMBUSTABLE MATERIAL TO BE IN CONTACT WITH BRICKS

ALLOW FINISHING ON FLOOR PROTECTOR

EXTERNAL "CAITEC AIR" VENTS

B

B

2390

1000 WINDOW HEIGHT

Warmington TF 2000

Warmington Industries Ltd.			
PH: 09 273 9227 FAX: 09 273 9241 WEB: www.warmington.co.nz			
TITLE	TF 2000 BLOCK ENCLOSURE WITH ACC	DATE	27/08/15
DRAWN	ROBERT	SCALE	NOT TO SCALE
REVISION	01		